



VDA - Arbeitskreis



Lebendgebärende Aquarienfische

**GWG** | Goodeid  
Working  
Group

# Acknowledgement

- Association Beauval Nature
- Association France Vivipares
- André Scheiwiller
- Bruno Kaubisch
- Christian Reusch
- Daniel Peter
- Felix Stadtfeld
- Fred Poeser
- Günther Schleussner
- Gunther Teichmann
- Johanna Barth
- Kees de Jong
- Leslie Dick
- Liliana Encarnação Rio Cardoso
- Manuel Zapater
- Maria Joao N Oliveira Mourato
- Michael Köck
- Nigel Hunter
- Paula Maria Ramos Gomes
- Paul Dixon
- Poecilia Scandinavia
- Shaun Stevens
- Ulrike Korte
- Yvonne Scheiwiller





# The Relict Splitfin – History. Life. Distribution



Photo-Credit: Anton Lamboj





Seth Eugene Meek  
collector in 1906/7  
(as *Goodea atripinnis*)

Clark Leavitt Hubbs  
describer in 1924  
(as *Goodea captiva*)



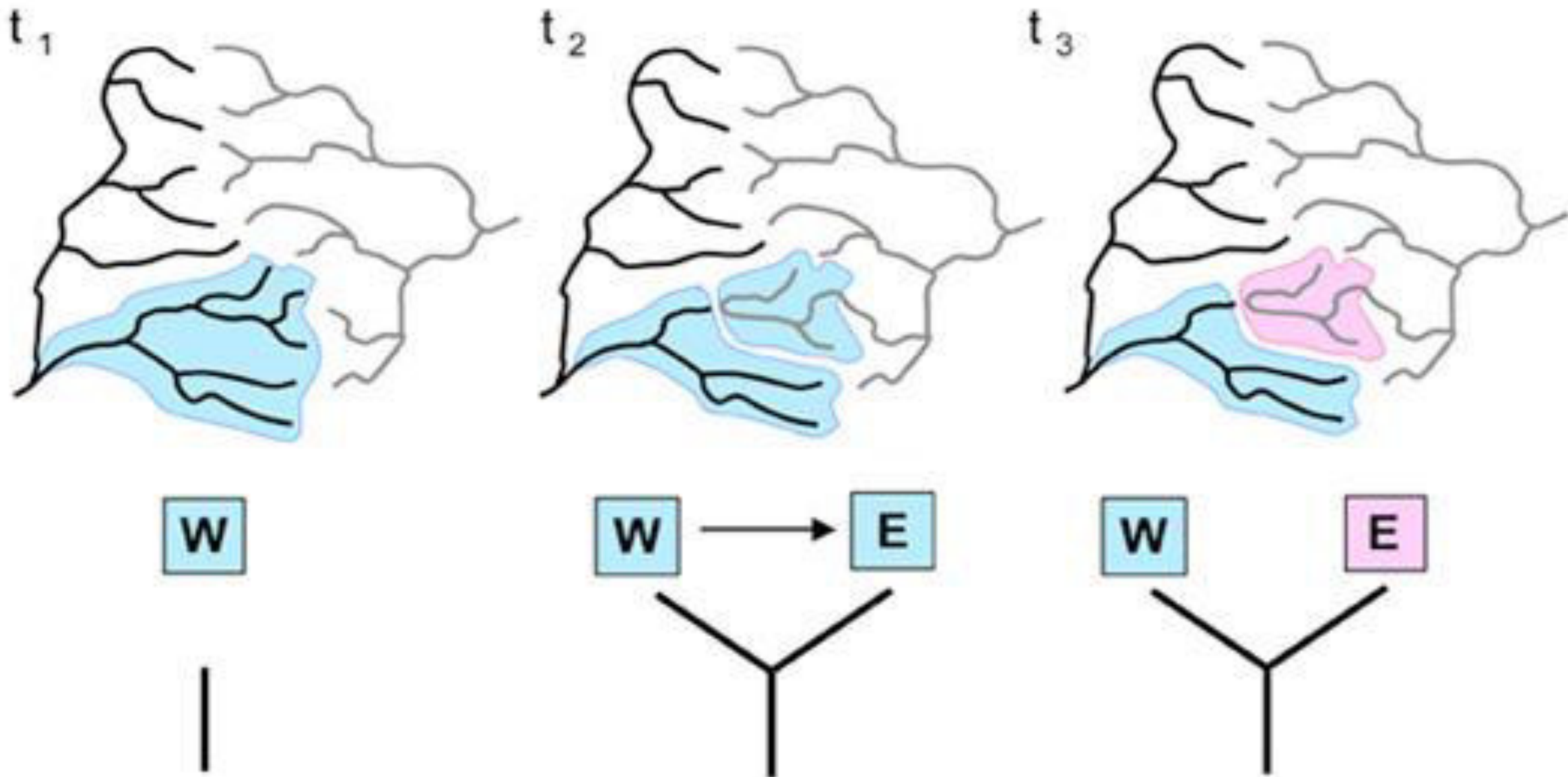


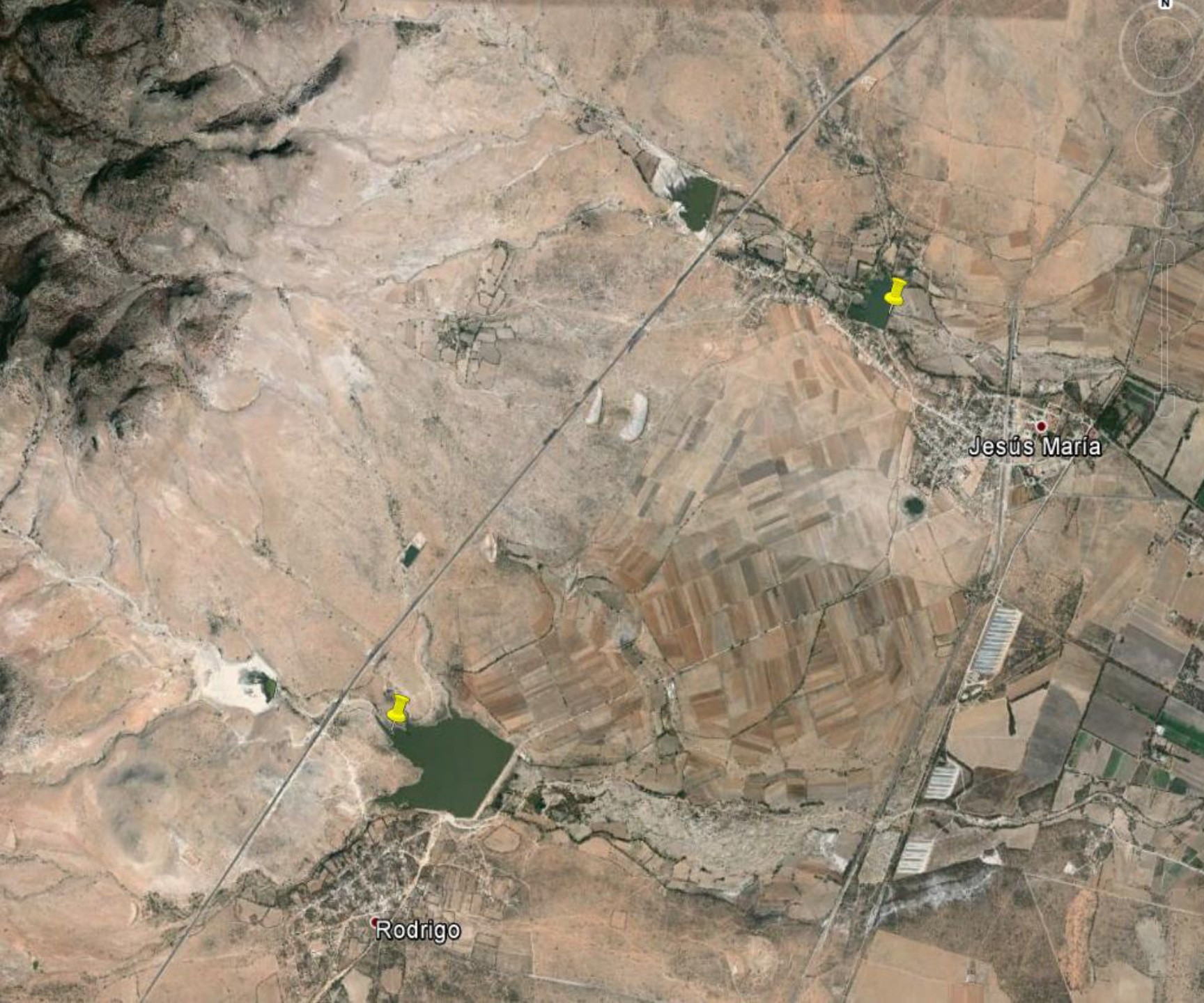
**Goodea atripinnis**



**Goodea captiva**







Where is the type location?

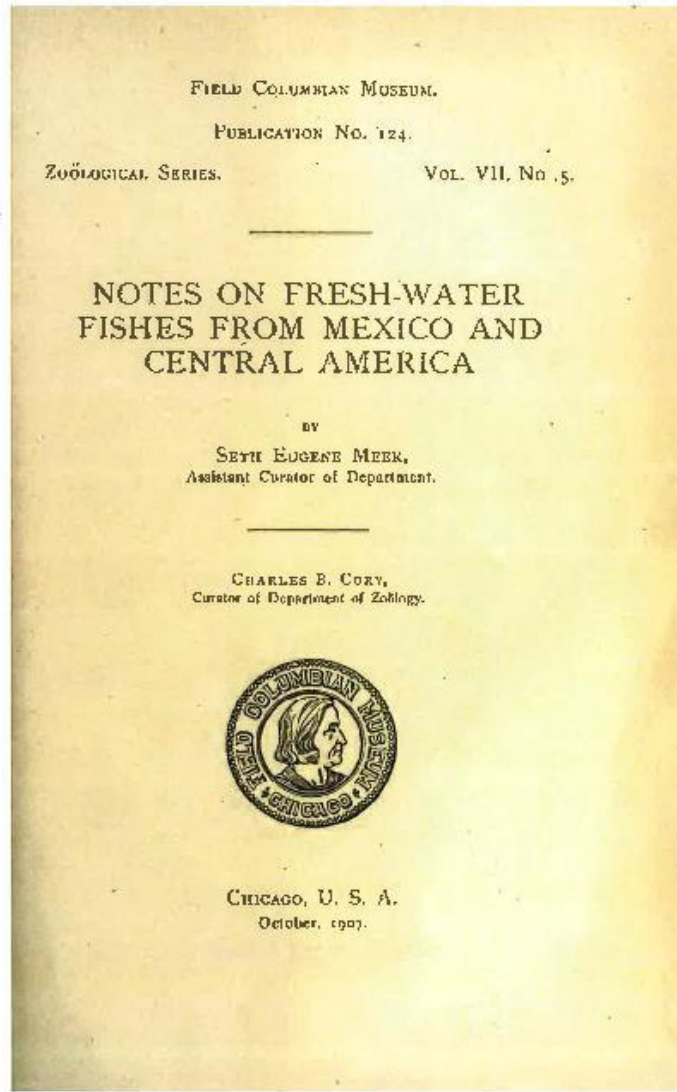
Following Artigas Azas (2015): not directly at Jesus Maria, but closer to Rodrigo





Rodrigo

Photo-Credit: Juan Miguel Artigas Azas



„The following is a list of fishes collected by the writer in Mexico, at San Miguel de Allende, Guanajuato, Jesus Maria, San Luis Obispo [sic!], and Roderiquez, Nuevo Leon, and by E. Heller and C. M. Barber at Sabinas, Coahuila. [...] There is a small stream at Jesus Maria which belongs to the Rio Panuco system. It is almost without water during the dry season. At the Hacienda a dam is built across the narrow valley forming above it a small lake. [...]“





So where is the type location?

Maybe it is near Jesus Maria, maybe not...

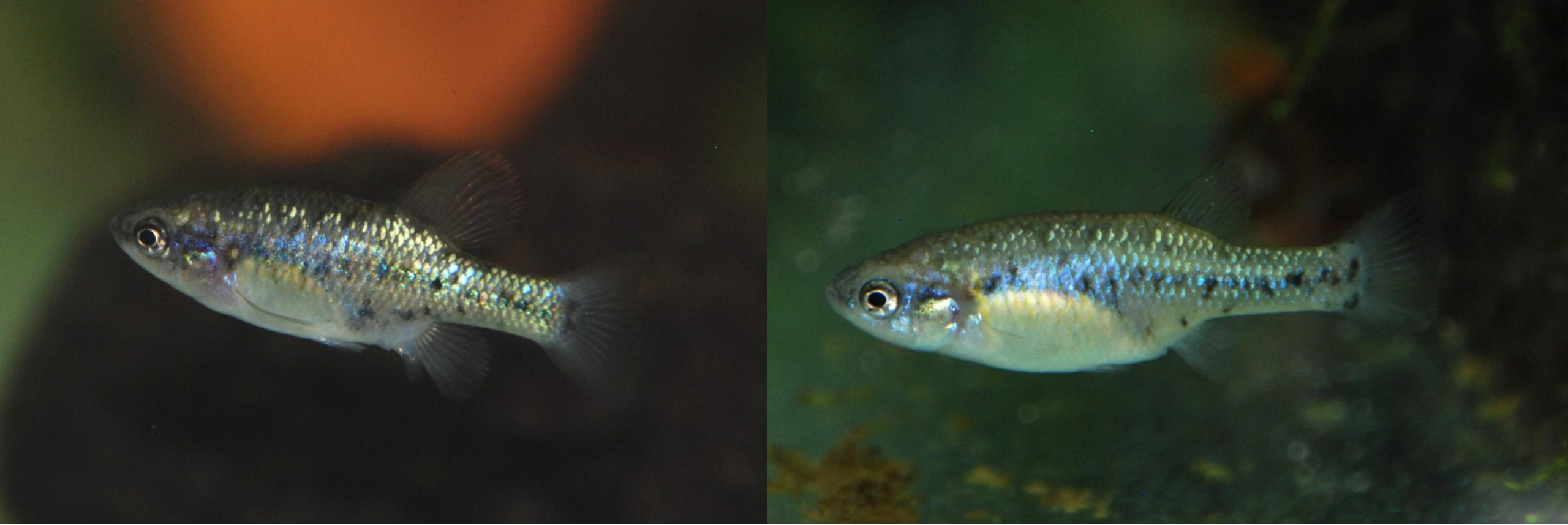




Jesus Maria

Photo-Credit: Michael Köck





locality: Rodrigo (Jesus Maria)

collection: Artigas Azas & Kaufman, 1997

MISCELLANEOUS PUBLICATIONS  
MUSEUM OF ZOOLOGY, UNIVERSITY OF MICHIGAN, NO. 43

STUDIES OF THE FISHES OF THE  
ORDER CYPRINODONTES.  
XVI. A REVISION OF THE  
GOODEIDAE

BY  
CARL L. HUBBS AND C. L. TURNER

ANN ARBOR  
UNIVERSITY OF MICHIGAN PRESS  
NOVEMBER 9, 1938

REVISION OF THE GOODEIDAE

PLATE V

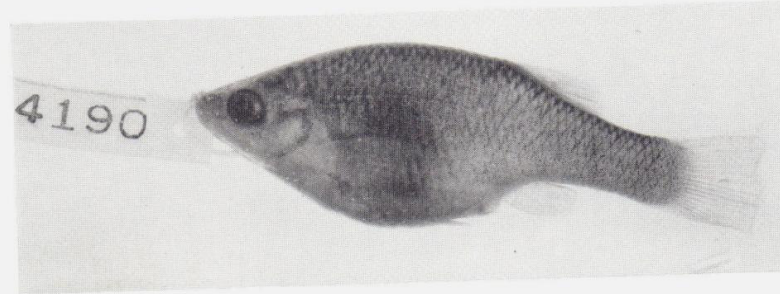


Fig. 1.

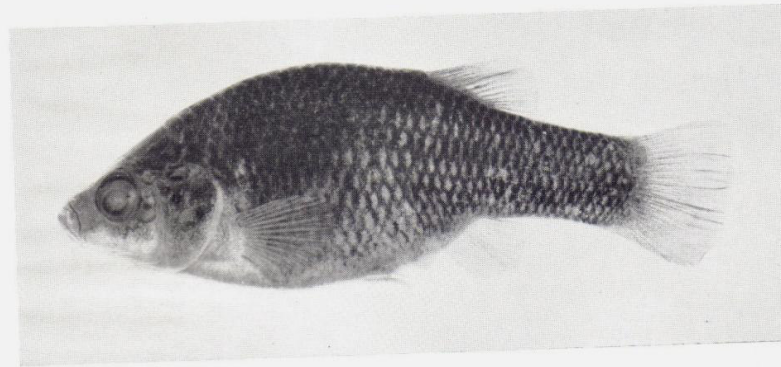


Fig. 2.



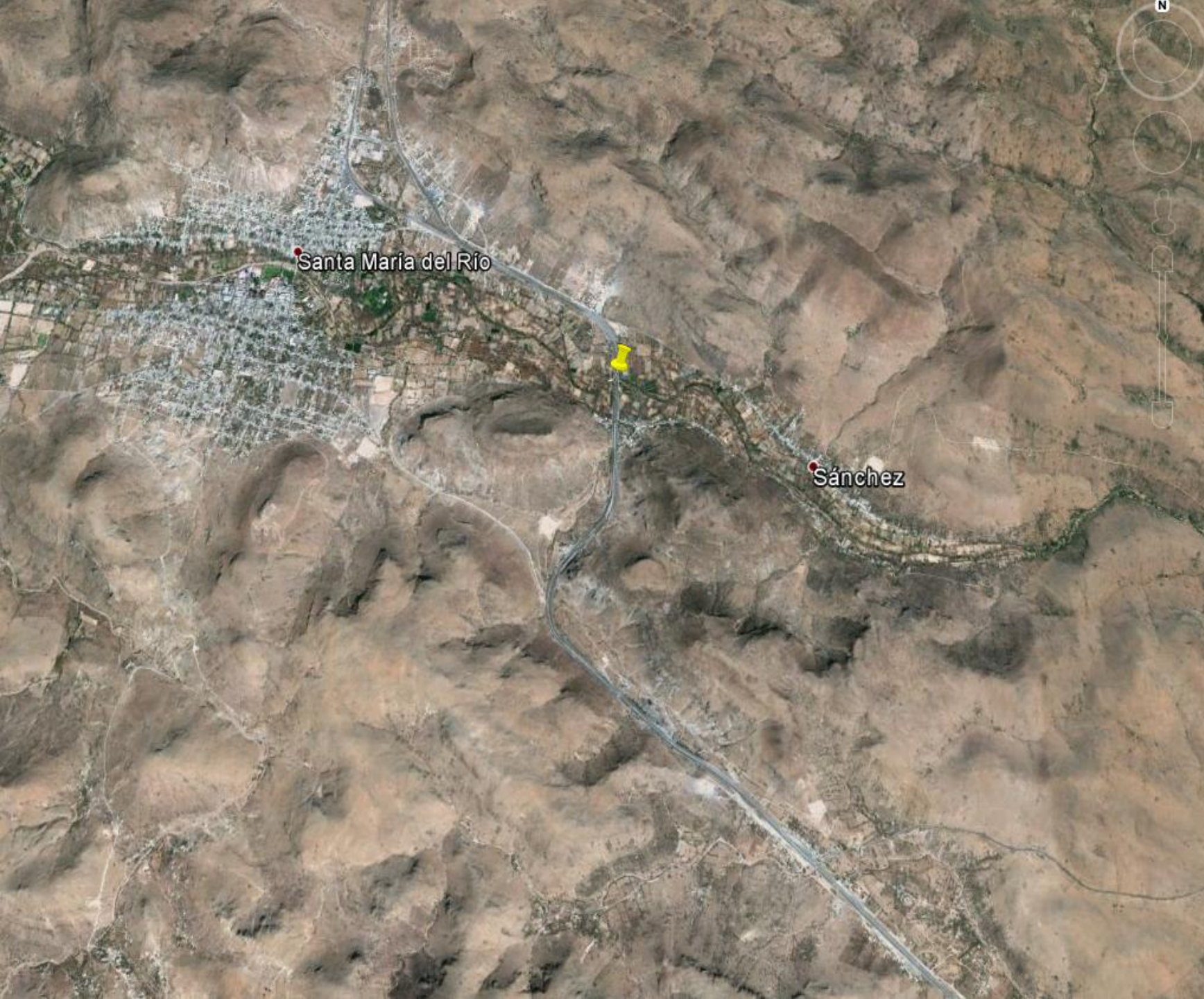
Fig. 3.

*X. captivus*

*X. erro*

*X. exsul*





Type location of  
*Xenoophorus erro*:  
Gordon, Whetzel  
& Ross, 1932





Río Santa María

Photo-Credit: Juan Miguel Artigas Azas





Power Plant, Villa de Reyes

Photo-Credit: Juan Miguel Artigas Azas





location: Río Santa Maria, near Santa Maria del Río  
collection: Miller, 1966





The types of  
*Xenoophorus*  
*exsul*:  
Lundell et al.,  
1934





Venado

Photo Credit: Michael Köck





locality: Venado

collection: Artigas Azas, Köck & Radax, 2014





Moctezuma

Photo-Credit: Michael Köck





locality: Moctezuma

collection: Artigas Azas, Köck & Radax, 2014









Dentition:

forked teeth  
lose insertion

mainly herbivorous feeding habits



# length of the intestine



*Ameca splendens*



*Xenophorus captivus*

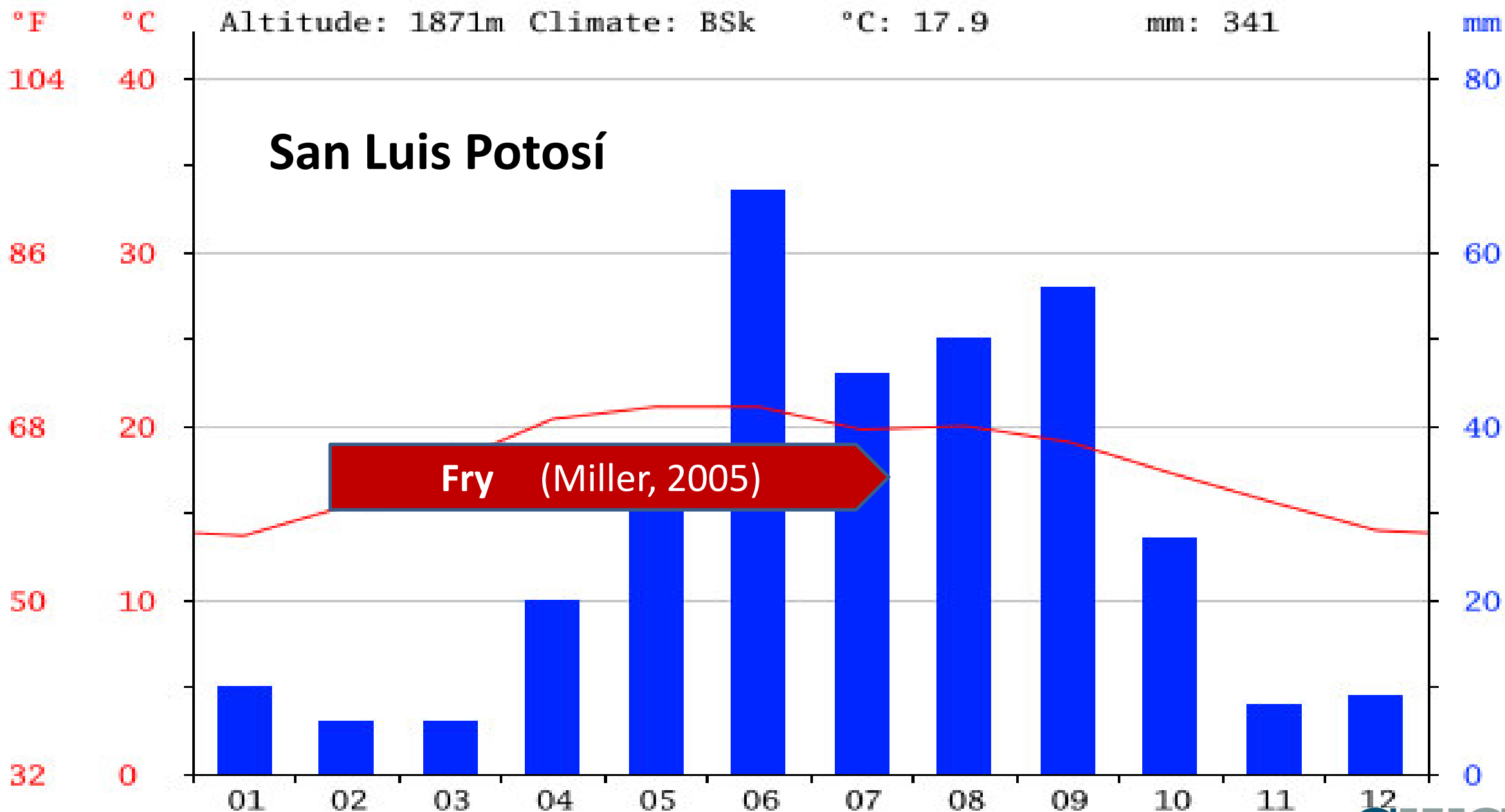


*Chapalichthys peraticus*

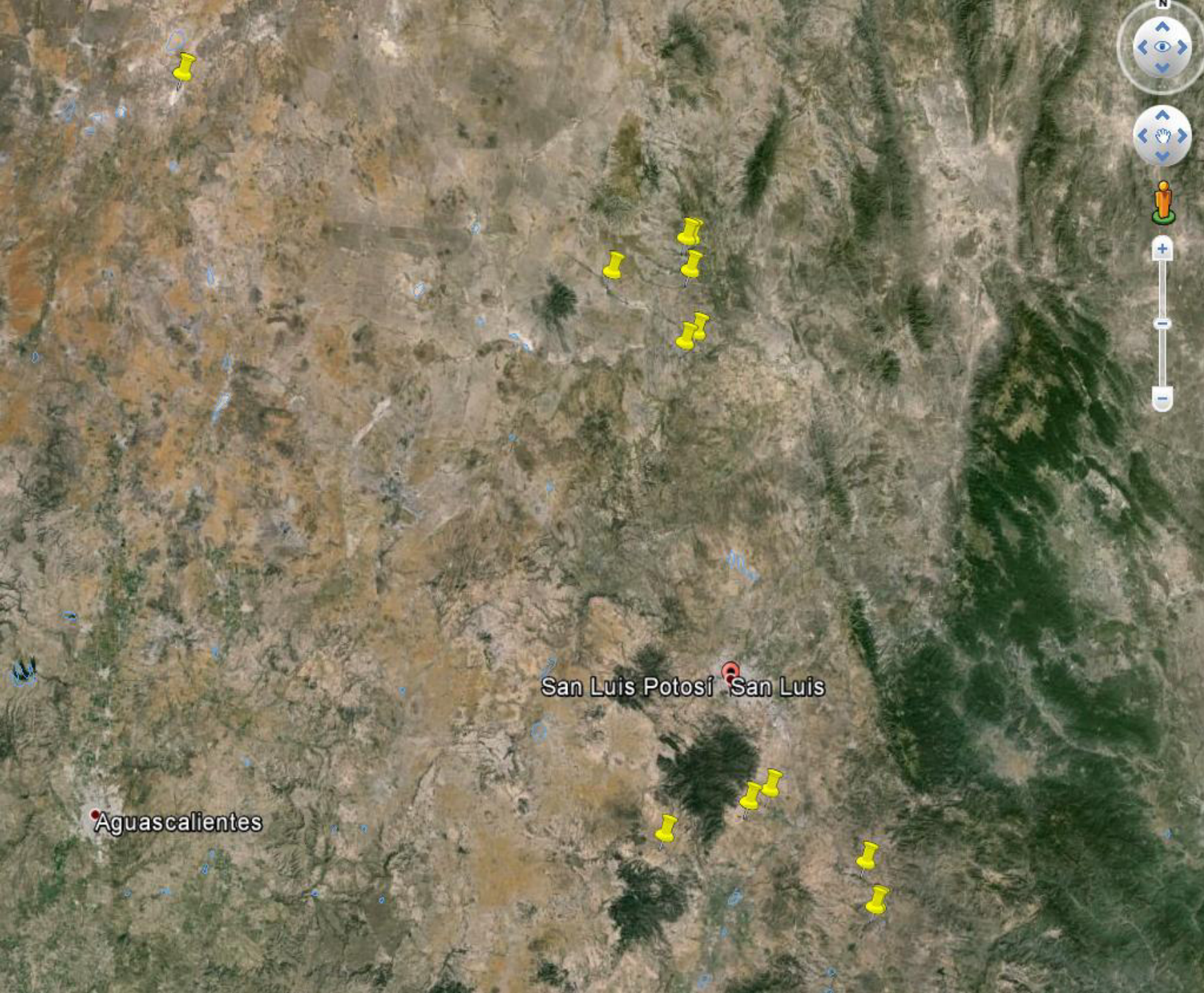


*Allophorus robustus*









known  
locations  
by 2015

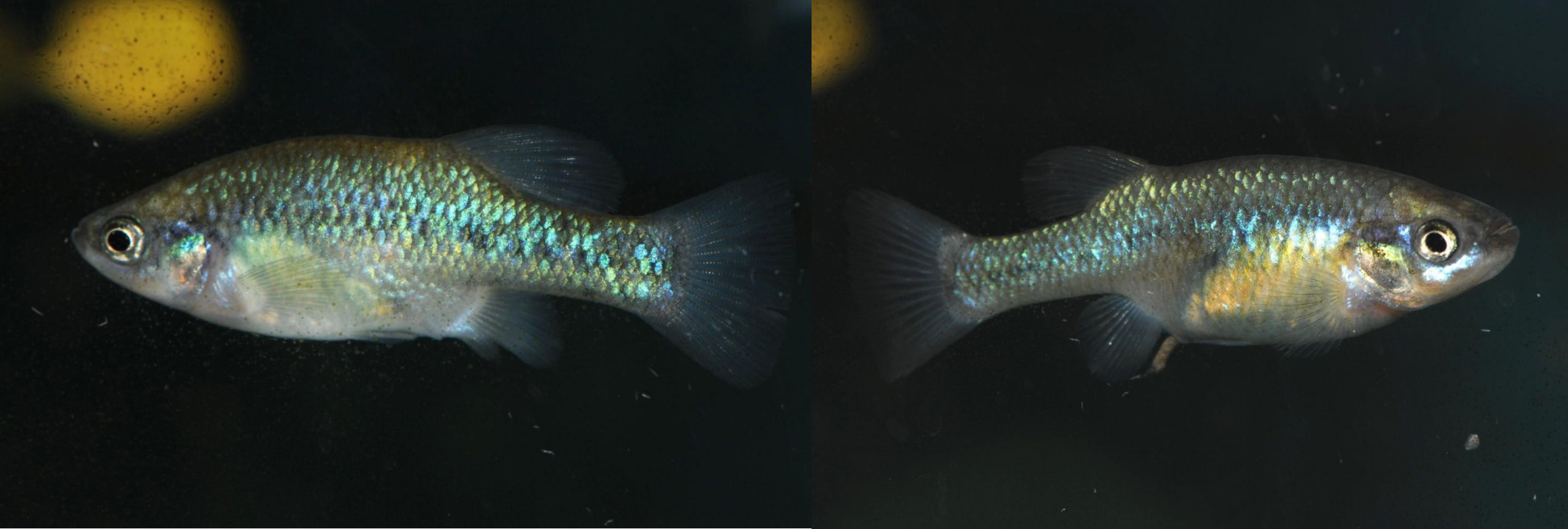




Río del Vaquero, Bledos

Picture from Panoramio





locality: Bledos

collection: Slaboch & Murko, 2010

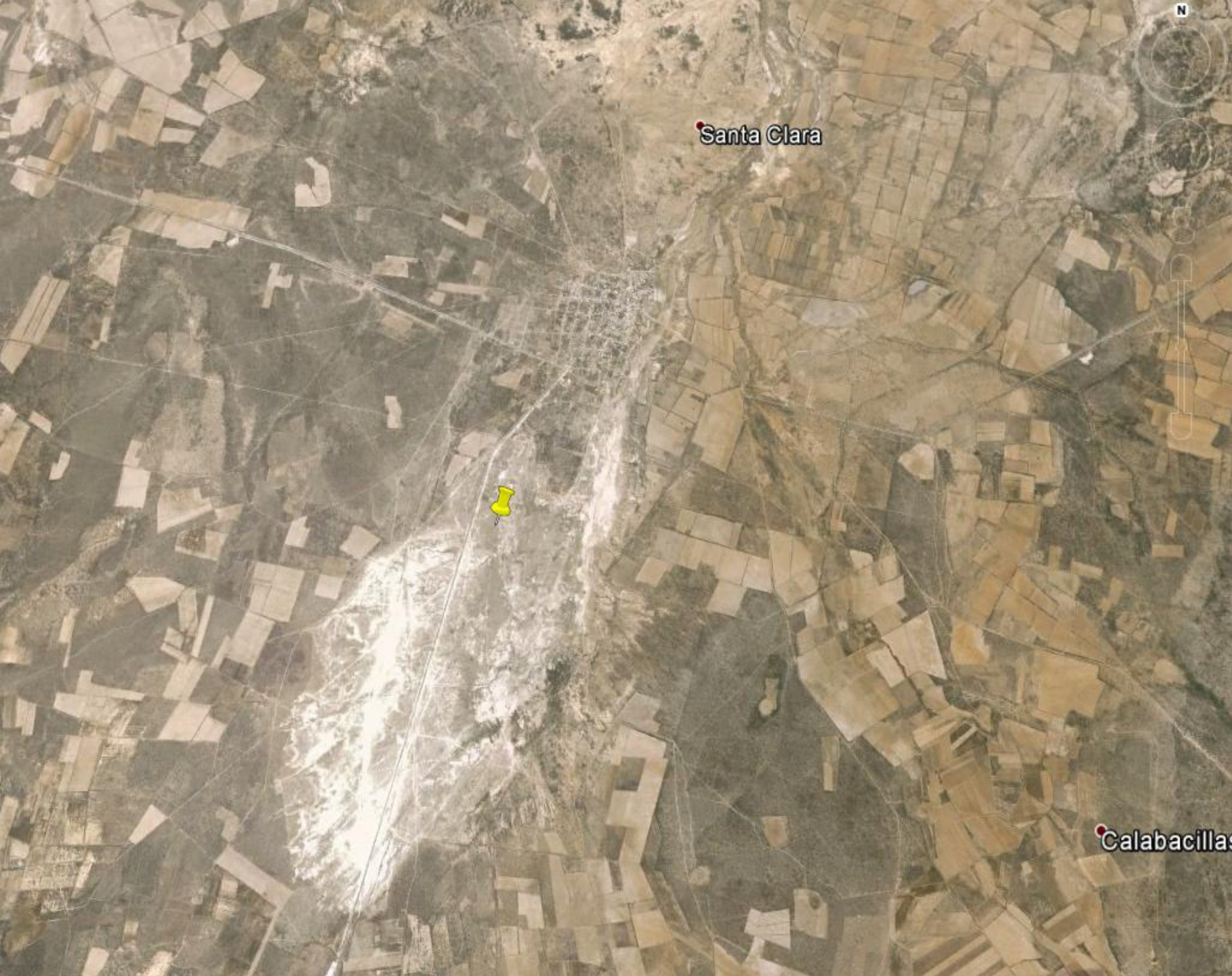




locality: Río Tierra Quemada

collection: Artigas Azas & Kaufman, early 1990's?





Illescas:  
Artigas Azas,  
1994





Illescas

Photo-Credit: Juan Miguel Artigas Azas

**GWG**

Goedeid  
Working  
Group





Illescas

Photo-Credit: Juan Miguel Artigas Azas



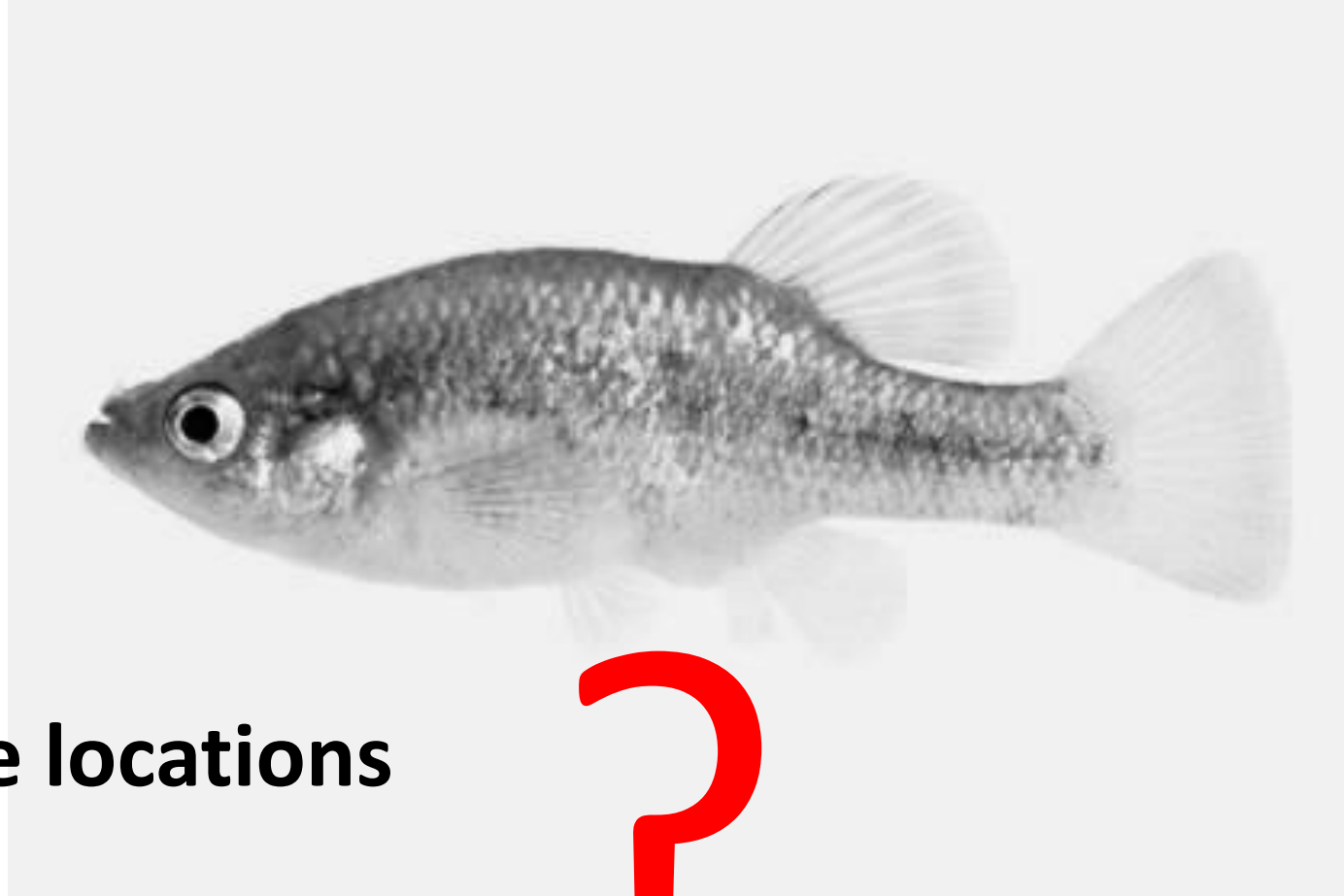


locality: Illescas

collection: Artigas Azas, 1994



**More locations**







# Río Francisco Murguía: Kabbes, 1998



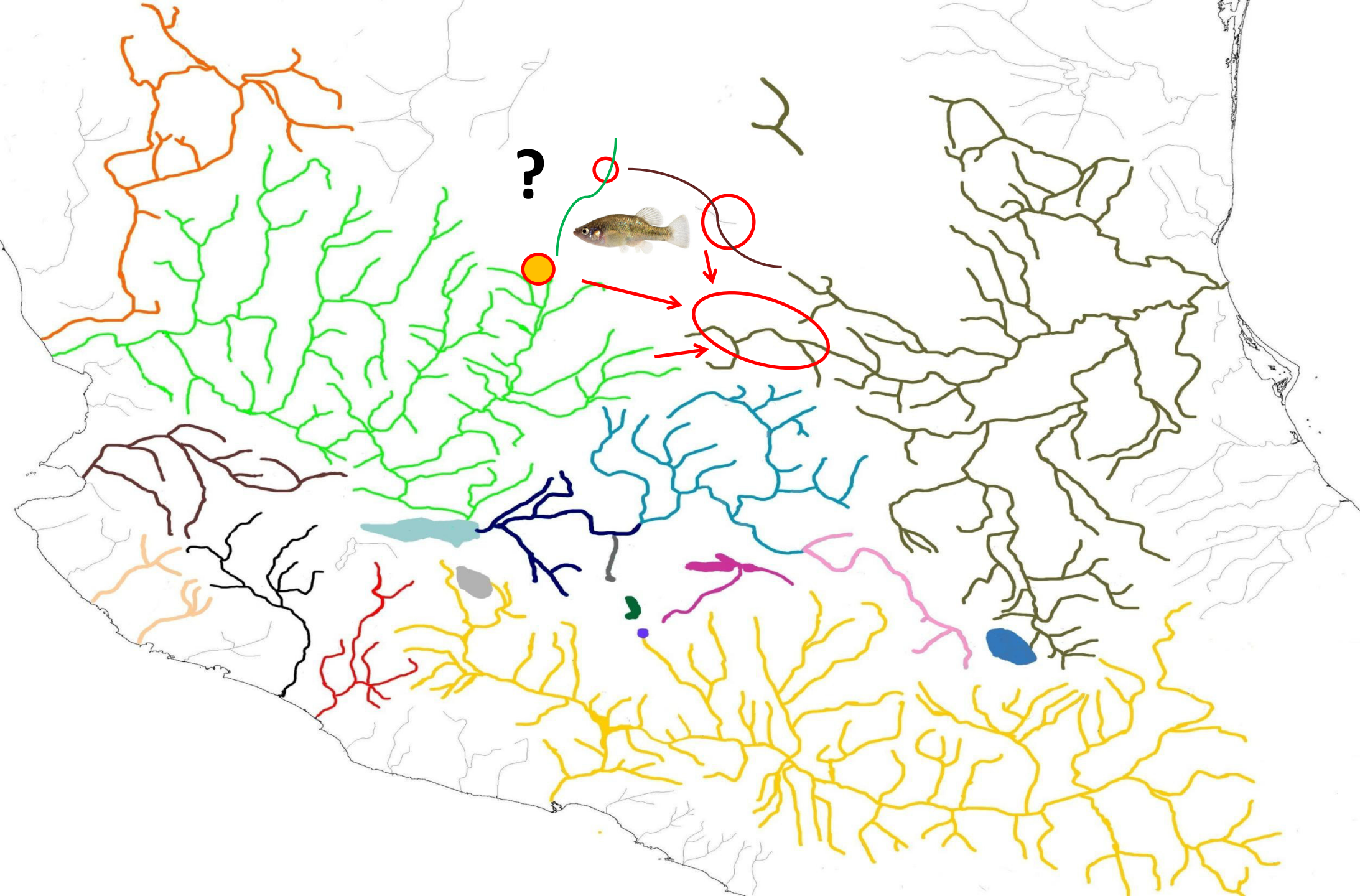


Río Francisco Murguía

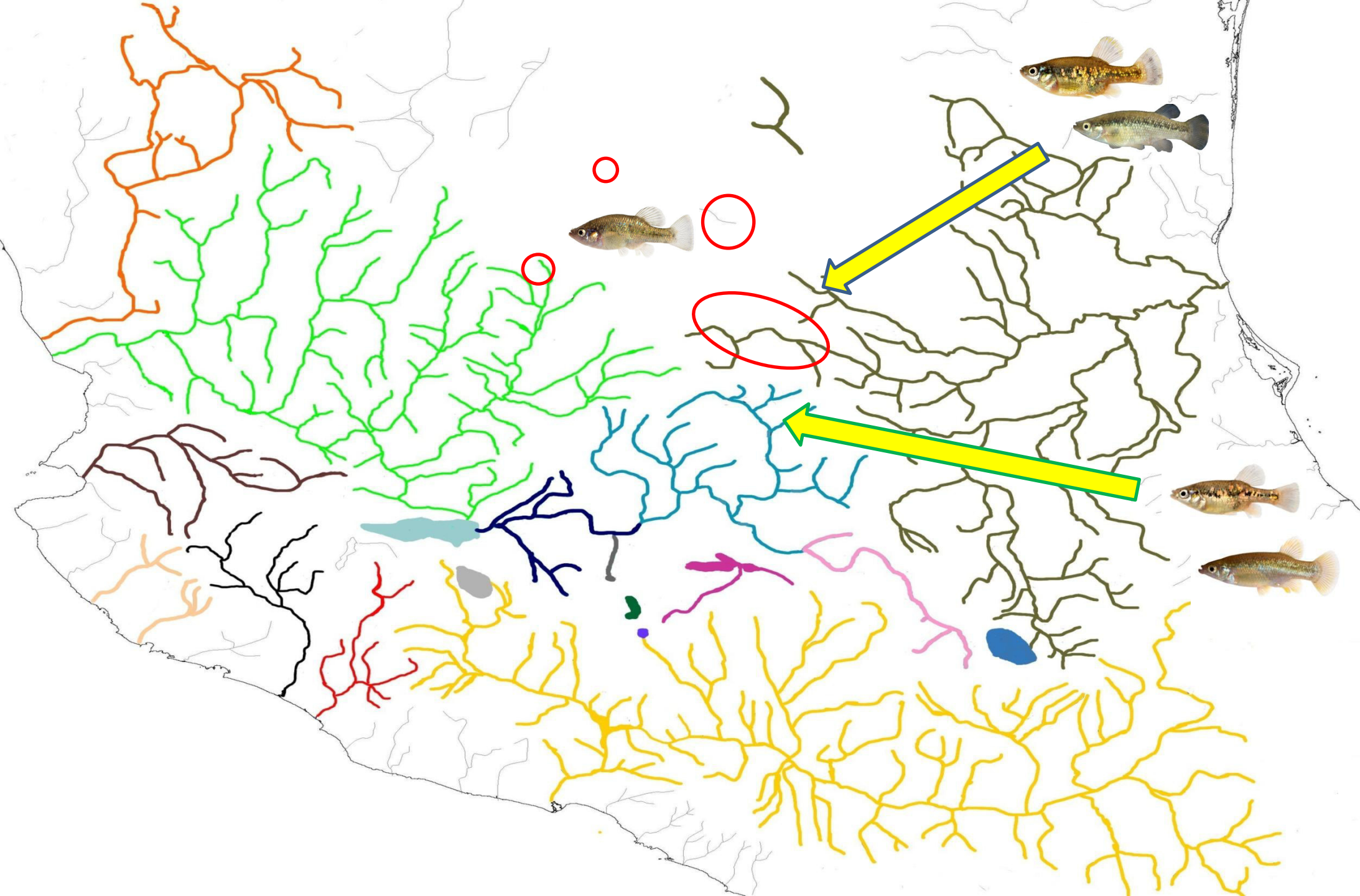
Picture taken from street view, Google Earth

© 2013 Google

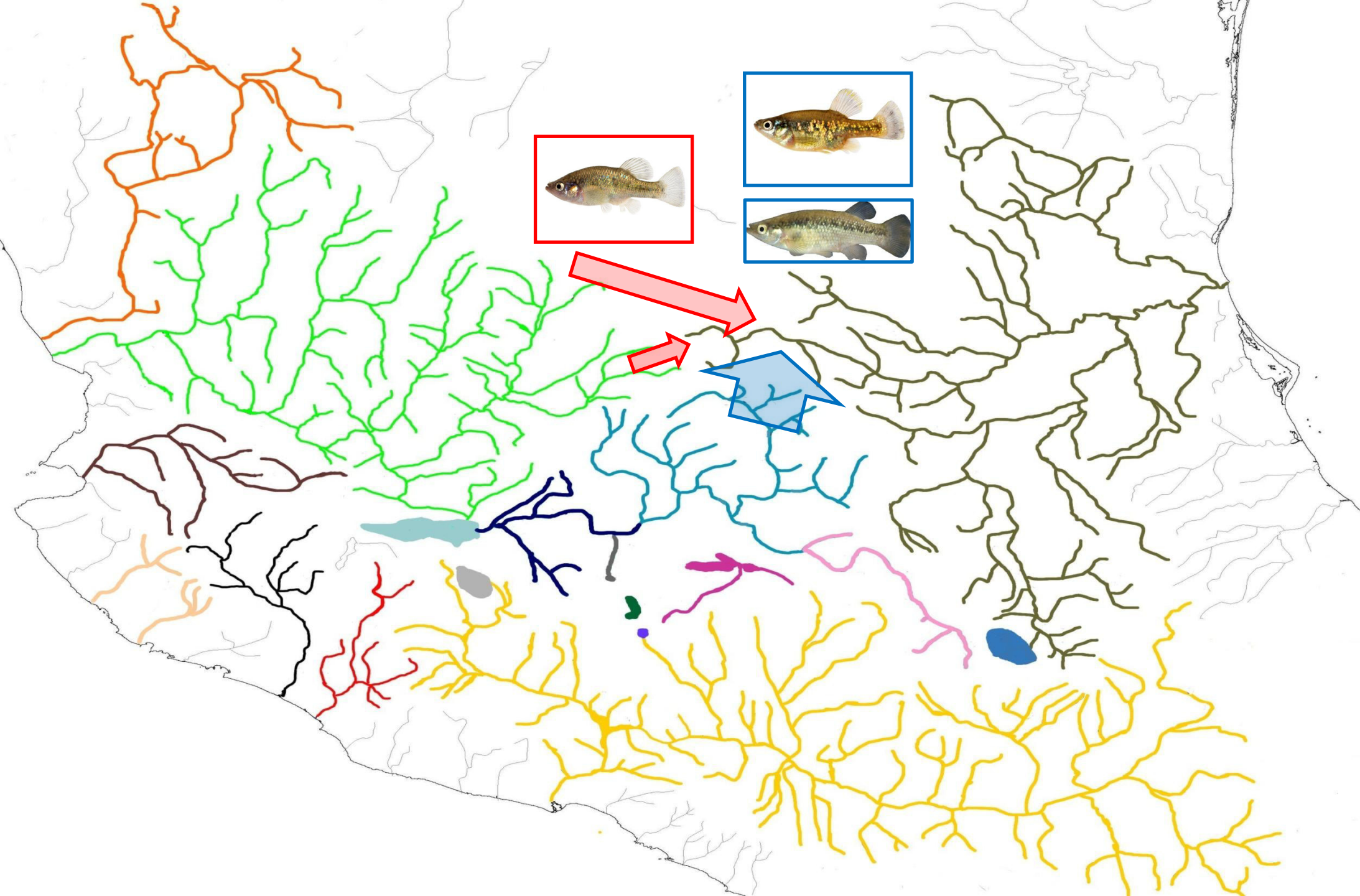














**Thank you**

